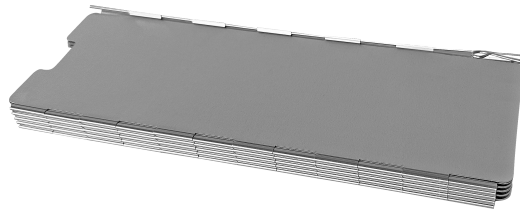
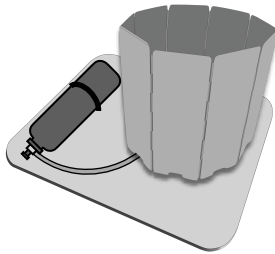
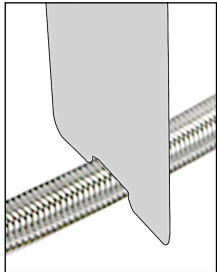


FLAME GUARD

INSTRUCTIONS



A Flame Guard is used to reflect heat back to your kettle and to prevent items touching an operating stove. Panels can be removed for smaller kettles and pots.



Light your stove and install the Flame Guard while it is priming.

1. Place the ventilation port of the first panel over the fuel line
2. Wrap the Flame Guard around the stove, placing the ventilation port of the last panel over the fuel line to keep the guard in place
3. Once your stove is fully operational place the kettle (with snow and a small amount of water) onto the stove inside the Flame Guard.
4. Ensure kettle shank is kept outside the Flame Guard while the stove is operating.
5. Never remove the Flame Guard while your stove is operating.

