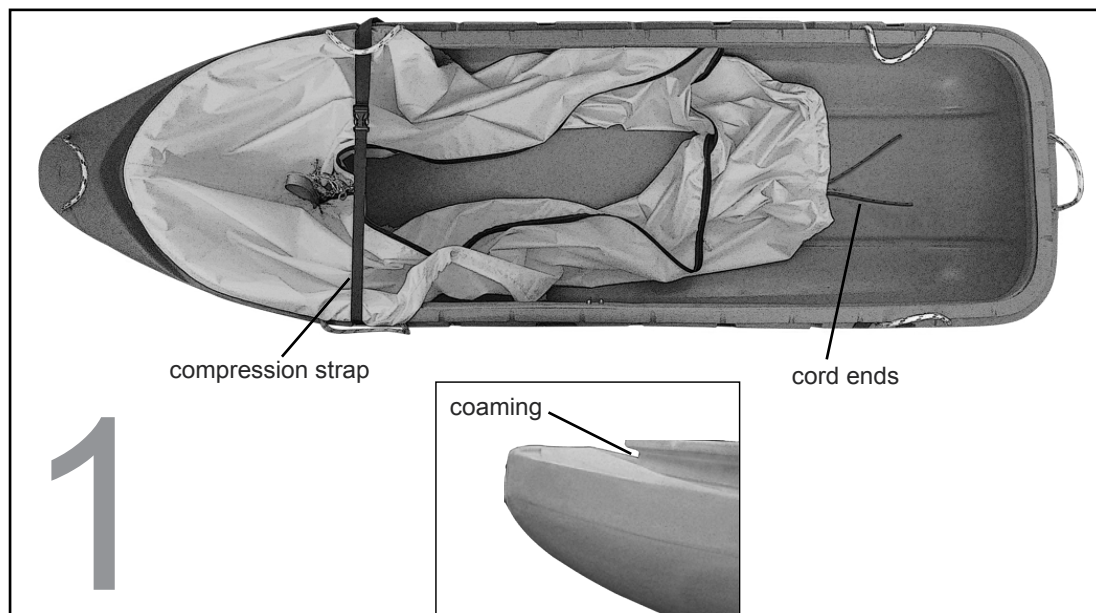
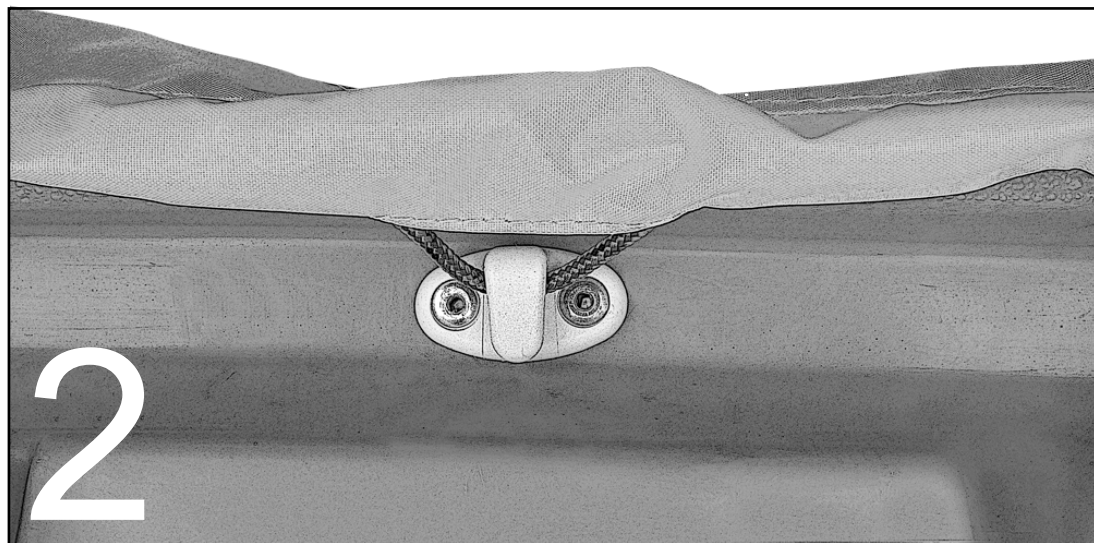




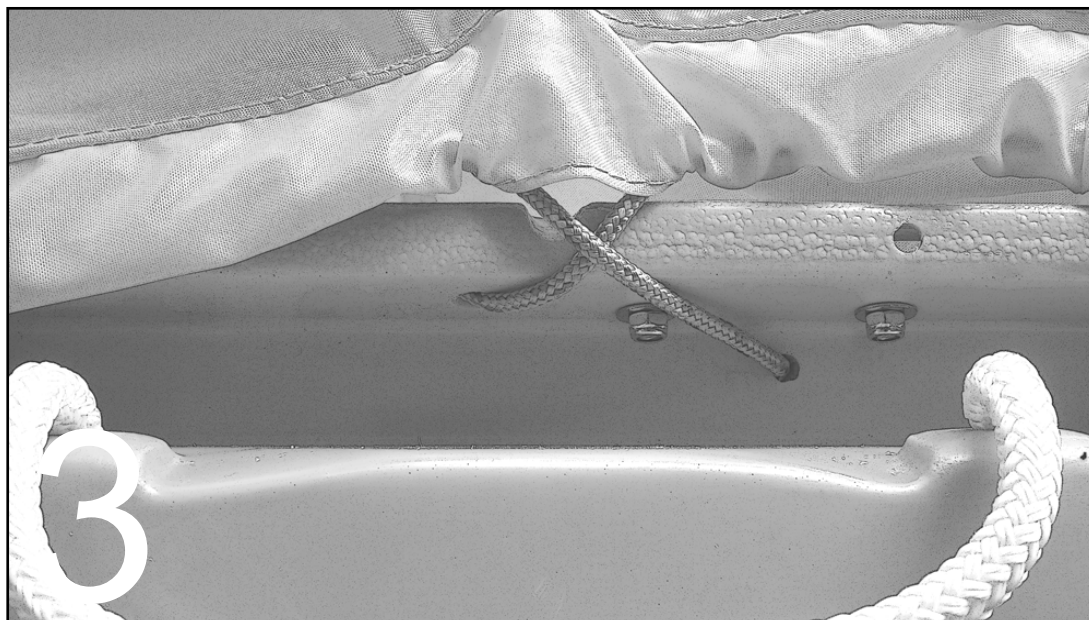
Lay the cover inside the sled with the cord ends at the rear of the sled. Place the front of the cover over the cockpit with the hem under the coaming (lip) and temporarily hold the cover in place using the front compression strap.



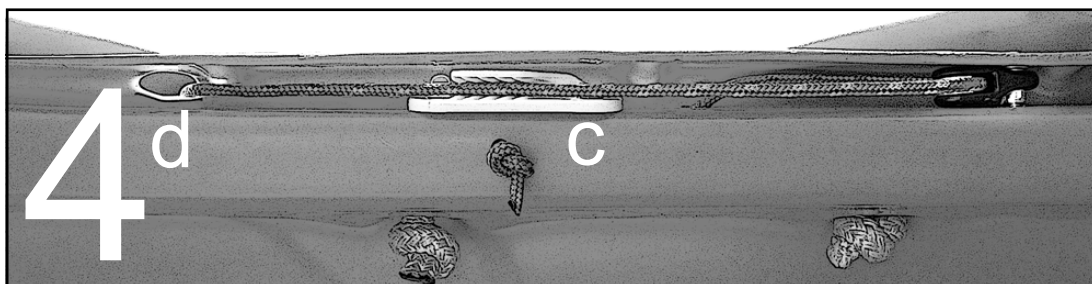
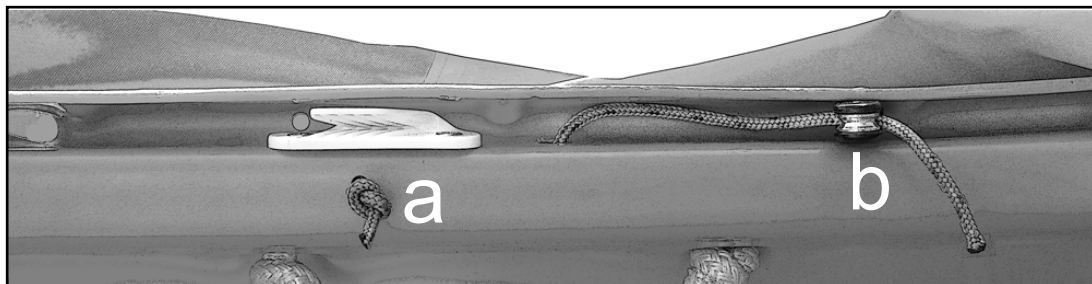
Pull the remainder of the cover over the sled, clipping the cord into the hooks under the coaming on both sides of the sled. Be sure that handles and straps are not caught under the cover.



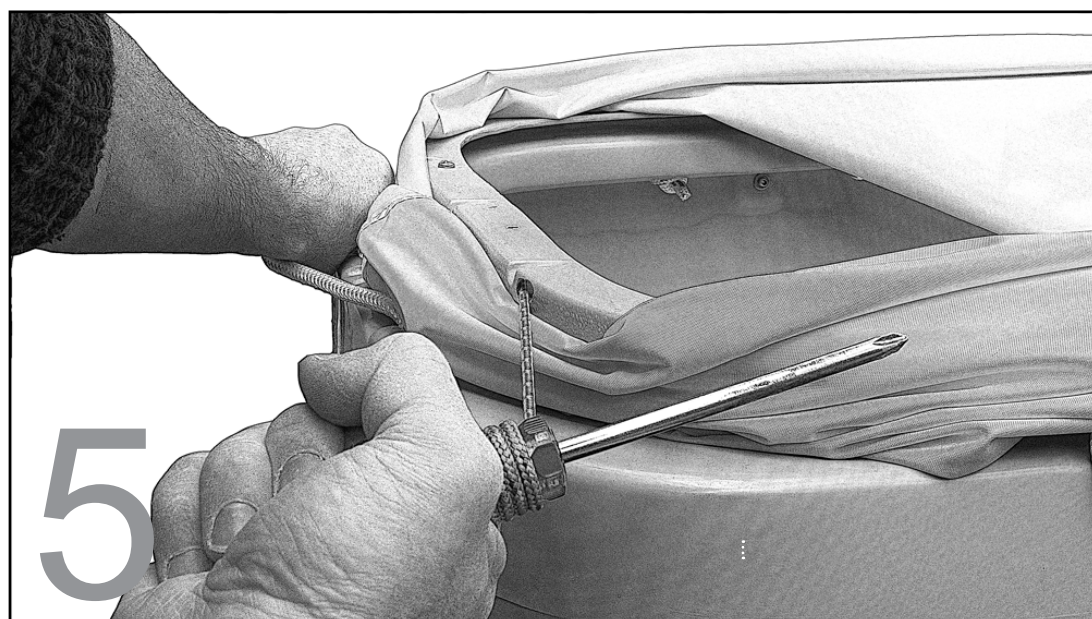
Working from the rear of the sled, cross the two cords over, threading one through the vertical wall of the coaming, the other through the underside of the coaming.



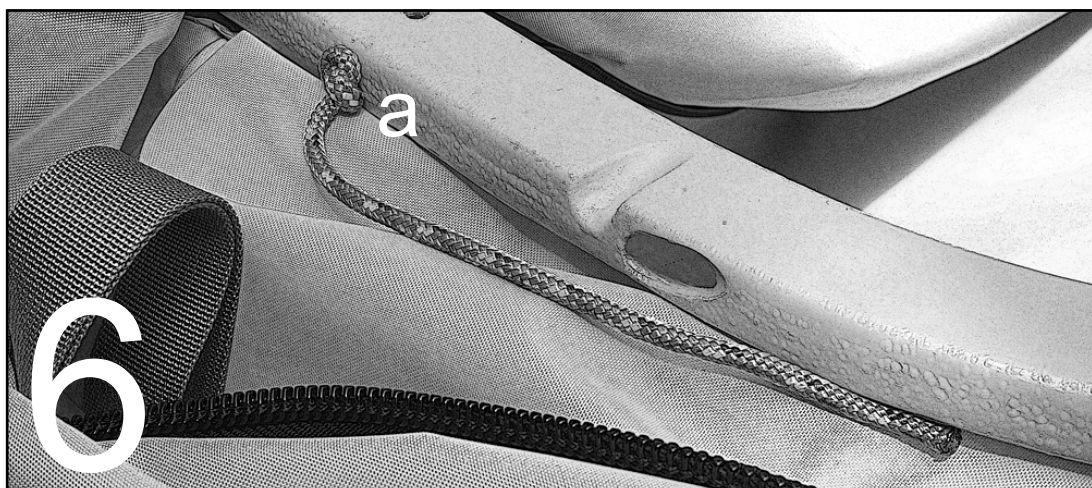
Unzip the cover. Working from inside the sled tie a stopper knot in the cord below the cleat (a). Thread the other end of the cord through the pulley wheel (b). Release the front compression strap then pull the cord through the pulley until the knot pulls tight. Feed the cord across the cleat (c) and then through the large tensioning eye (d).



Working from the rear of the sled, wrap the loose end around a tool or stick and pull very firmly to cinch the cover around the coaming. Pull as firmly as you can, using the rear handle for purchase if required. Be sure that the cord locks off in the cleat while the cord is under tension.

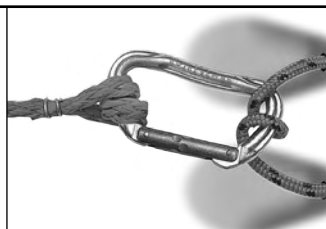


Un-thread the cord from the tensioning eye and thread it through the locking eye behind the cleat (a), giving the cord a final cinch in the cleat. Tie a stopper knot and tuck the excess cord behind the cover.



Check cord tension from time to time and tighten if the cover is loose.

To reduce rope wear always place a double bend in the tow loop when attaching carabiners or traces (hauling lines).



A complete range of parts and accessories is available at www.icetrek.com